

## Heavy Duty Welding Booth

8x8 • 10x10 • 12x12

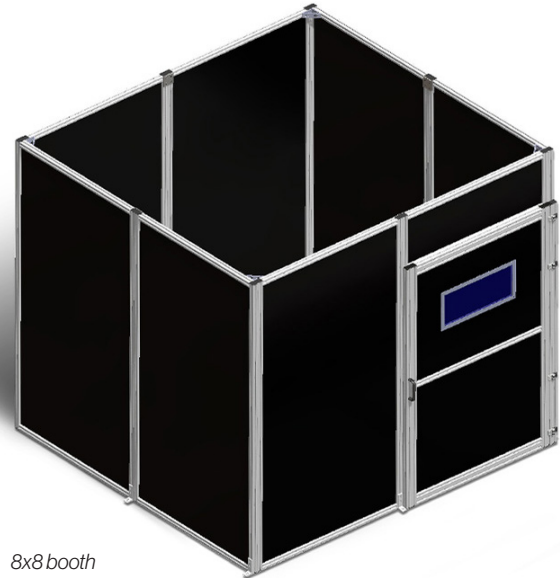
### Feature

- Swinging door
- Viewing window
- Pre-assembled panels for easy onsite installation
- Floor anchors
- Open roof (roof kit available separately)

### Add on options:

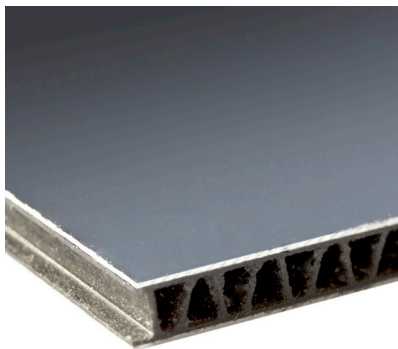
- Extra window(s)
- Interlock switch
- Roof with lighting kit

Part Numbers	Inner Dimensions	Outer Dimensions
BM3.M5P06.8x8	98" x 101"	101" x 105"
BM3.M5P06.10x10	117" x 120"	122" x 124"
BM3.M5P06.12x12	148 x 152"	152" x 155"



8x8 booth

### M5P06 Material

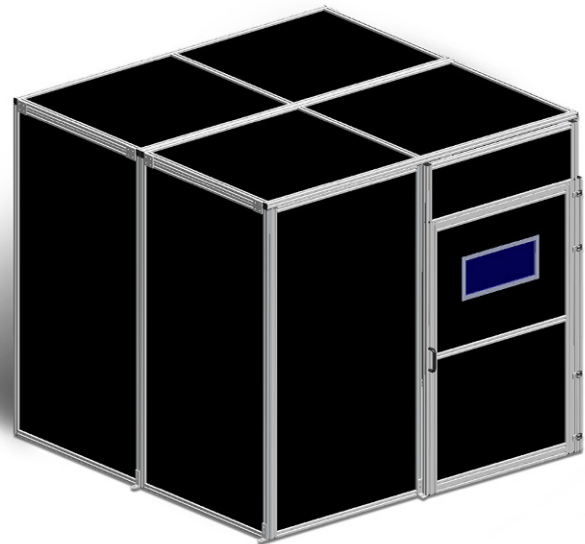


<b>Color</b>	Black
<b>Weight</b>	.78 lb./ft <sup>2</sup>
<b>Thickness</b>	0.232 in. ± 1/32 in.
<b>Description</b>	Two layers of aluminum bonded with corrugated polyallomer core
<b>Features</b>	Maintenance-free, strong, lightweight. Doesn't swell, chip, corrode, flake, or peel

### Irradiance Specifications

Wavelength	Maximum Irradiance*
315 - 1050 nm	1,000 W/cm <sup>2</sup>
>1050 - 1400 nm	2,500 W/cm <sup>2</sup>
10600 nm	10,000 W/cm <sup>2</sup>

\*Tested for 100 seconds at a 1mm beam diameter



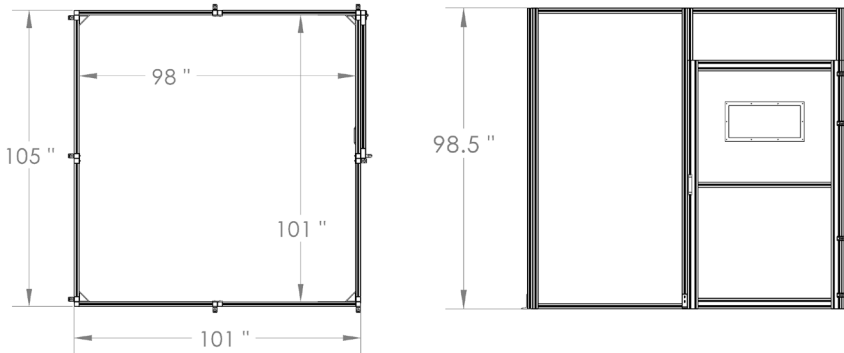
8x8 booth with optional roof

*Shirley Gibbons*

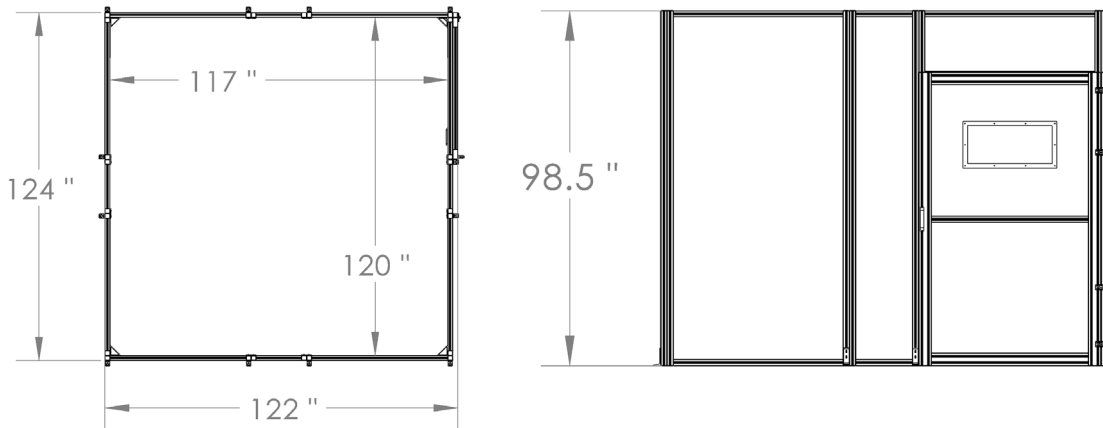
Shirley Gibbons (Apr 10, 2024 12:55 CDT)  
Authorized Laservision Signature

## Three sizes:

### 8x8



### 10x10



### 12x12

